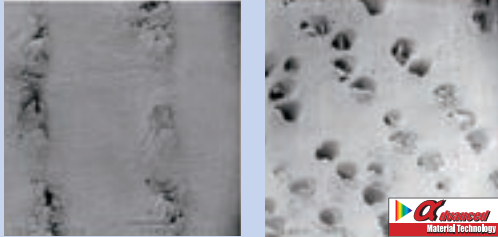


Technology



Advanced Material Technology treated cutting edges stay sharper longer.

The pictures above show the pores of oak after a cutting path of 100m. The HSS cutting edge is already a little blunt and instead of cutting the pores cleanly, it compresses the fibers.

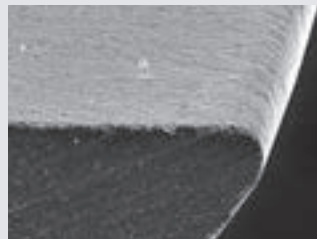
Advanced Material Technology still cuts the pores cleanly, also when cutting against the grain.

An uncoated edge wears out quickly. The blunt cutting edge tears out the grain and does not give a satisfactory cut finish.



Advanced Material Technology is an implantation into a substrate material. In case of planer knives it is applied to the rake face of a HSS substrate.

Advanced Material Technology treated cutting edges stay very sharp for a very long time. Only little traces of wear in form of a chamfer on the back and small rounding on the face appear during the time of use.



HSS cutting edge after cutting 1000m of Spruce



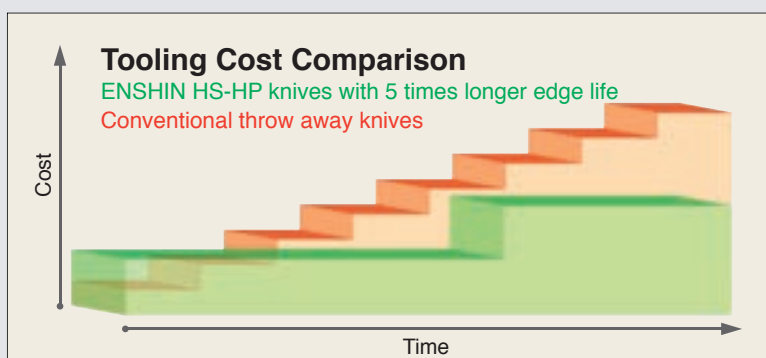
HS-HP cutting edge after cutting 1000m of Spruce

Knives for More User Value

Every knife has two cutting edges in reversible design, which makes the ENSHIN a very economical tooling solution.

Knife quality HS-HP is high speed steel treated with Advanced Material Technology. Advanced Material Technology provides up to 5 times longer edge life compared with regular HSS knives when planing softwoods.

For planing of hard and tropical timber, carbide knives (HW) provide excellent lifetimes in correlation with finest surfaces.



Every knife has a chip breaker for finest surfaces even when cutting against the grain direction.

Every cutting edge is finely lapped, which ensures perfect cutting results even when planing twisted grained timber.

HS-HP knives are for single use. No edge life loss after grinding, no inconsistent cut quality but high process stability and trouble free working.